

AMAZONTM LCP

Scapula Locking Plates 3.5 mm



Introduction

Fractures of the scapula are rare. The relative rarity of the more severely displaced injuries makes internal fixation of scapula fractures technically challenging. Anatomic constraints, particularly the scapula's limited osseous anatomy, curved posterior surface and unique dimensions have contributed to the complexity of traditional operative treatment methods.

The AMAZON™ Scapula Locking Plates 3.5 mm System offers indication-specific titanium plates that can address challenging fractures of the scapula, including the glenoid, medial and lateral border, acromion, and scapular spine. The pre-contoured plates minimize the need for bending while acting as a template for optimal implant placement and guiding screw fixation to osseous regions.

Implant Features

■ Fracture-Specific System

Little to no bending is required due to the pre-contoured plate geometry that matches patient anatomy. The Scapula Plating System also acts as a template for restoring the patient's original anatomy when reconstructing a severely displaced fracture, a significant advantage over traditional straight plates.

■ Comprehensive Plating Options

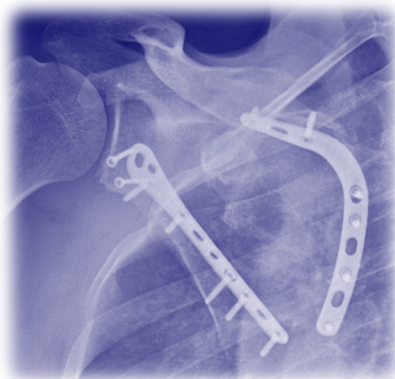
Multiple plate options are available to fit the anatomic variety of scapula curvatures. The Medial and Lateral Border Plates are frequently used for displaced scapula body and glenoid neck fractures. The Glenoid Plate may be selected for displaced intra-articular glenoid fractures. The Acromion Plates are utilized for fractures along the acromion of the scapula spine.

■ Designed to Streamline Surgery

Pre-contoured plates are designed to act as a template by replicating scapular anatomy and may help save operating time by reducing the need for plate bending.

Indications

- Scapular Body Fractures
- Glenoid Neck Fractures
- Intra-articular Glenoid Fractures
- Scapula Spine Fractures
- Acromion Fractures
- Os Acromiale



Implant Information



Scapula Glenoid Locking Plate 3.5 mm

| REF (TIT) | HOLES | DIRECTION |
|--------------|-------|-----------|
| MOI 35961004 | 4 | LEFT |
| MOI 35962004 | 4 | RIGHT |

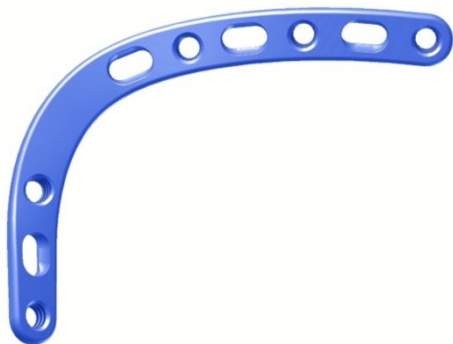
Screws: 3.5 mm Locking Screws / 3.5 mm Cortex Screws /
4.0 mm Cancellous Screws



Scapula Lateral Border Locking Plate 3.5 mm

| REF (TIT) | HOLES | DIRECTION |
|--------------|-------|-----------|
| MOI 35965010 | 10 | LEFT |
| MOI 35966010 | 10 | RIGHT |

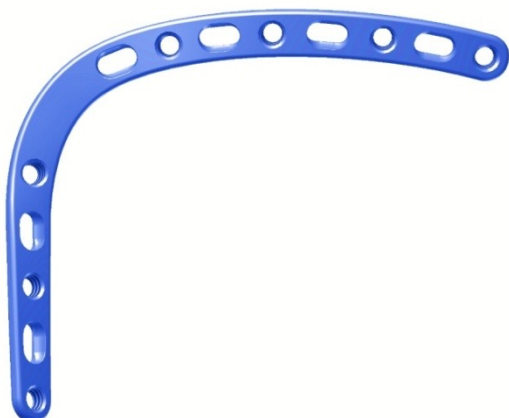
Screws: 3.5 mm Locking Screws / 3.5 mm Cortex Screws /
4.0 mm Cancellous Screws



Scapula Medial Border Locking Plate 3.5 mm, Small

| REF (TIT) | HOLES | DIRECTION |
|--------------|-------|-----------|
| MOI 35967009 | 9 | LEFT |
| MOI 35968009 | 9 | RIGHT |

Screws: 3.5 mm Locking Screws / 3.5 mm Cortex Screws /
4.0 mm Cancellous Screws



Scapula Medial Border Locking Plate 3.5 mm, Large

| REF (TIT) | HOLES | DIRECTION |
|--------------|-------|-----------|
| MOI 35969013 | 13 | LEFT |
| MOI 35970013 | 13 | RIGHT |

Screws: 3.5 mm Locking Screws / 3.5 mm Cortex Screws /
4.0 mm Cancellous Screws



Scapula Acromion Locking Plate 3.5 mm

| REF (TIT) | HOLES | DIRECTION |
|--------------|-------|-----------|
| MOI 35963006 | 6 | LEFT |
| MOI 35963007 | 7 | LEFT |
| MOI 35964006 | 6 | RIGHT |
| MOI 35964007 | 7 | RIGHT |

Screws: 3.5 mm Locking Screws / 3.5 mm Cortex Screws /
4.0 mm Cancellous Screws



USA OFFICE

2404 Hollywood Blvd.
Hollywood, FL 33020

PUERTO RICO OFFICE

1660 Santa Ana Street
Esq. Fidalgo Diaz,
San Juan, Puerto Rico 00909

E-mail: info@madisonorthoinc.com
Website: www.madisonorthoinc.com

