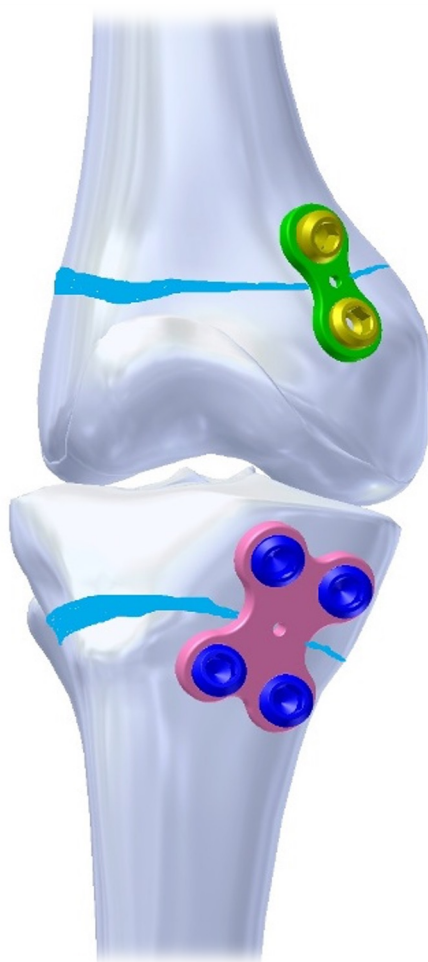


EIGHT-Q

Guided Growth Plating System



System Overview

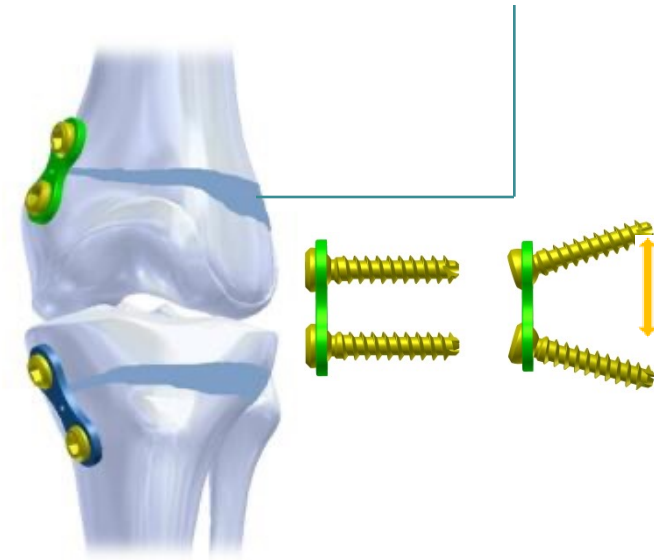
Limb deformities in children are relatively common and occasionally require surgical treatment. The EIGHT-Q™ guided growth plating system is an extra-periosteal plate that uses the robust growth potential of the child's physis to gently guide correction of angular deformity. The system contains multiple plate sizes, along with cannulated and solid screw options to provide gentle, early intervention for patients as young as 18 months.

The Eight-Plate is a minimally invasive, secure implant for hemi-epiphysiodesis that allows speedy post-operative recovery with immediate weight bearing. The plate uses two holes and diverging screws to function like a hinge and avoid physis compression. It gently guides the natural growth process and restores limb alignment without the need for invasive osteotomy.

The Quad-Plate is designed to provide more surgical options in the treatment of pediatric angular deformities.

Implant Features

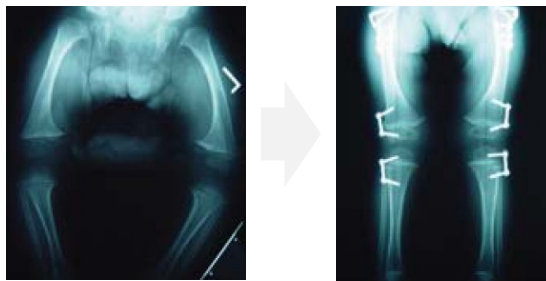
- Contoured plate bends for anatomic fit and flexibility during unilateral growth.
- Central pilot hole for accurate placement over the physis.
- Fully threaded cannulated screws resist pull out forces and allow easy removal after treatment.
- Diverging screws function like a hinge to gently guide natural growth



Indications

The EIGHT-Q™ guided growth plating system is an angular deformity correction plate, indicated for gradual correction of pediatric deformities in upper and lower extremities:

- Cubitus varus (post supracondylar fracture)
- Knee valgus, varus, oblique plane, flexion deformity, recurvatum
- Ankle valgus



Implant Information

Eight-Plates

REF (TIT)	SIZES (mm)
MOI 35254012	12
MOI 35254016	16



Quad-Plates

REF (TIT)	SIZES (mm)
MOI 35713016	16
MOI 35713022	22



Cannulated Screw 4.5mm, cancellous

REF (TIT)	SIZES (mm)
MOI 35255016	16
MOI 35355024	24
MOI 35255032	32



Solid Screw 4.5mm, cancellous

REF (TIT)	SIZES (mm)
MOI 35714024	24
MOI 35714032	32



Instrument Information

	REF	DESCRIPTION	UNITS
1	MOI 3200007E	K-Wire 1.5 mm, with Trocar Tip	3
2	MOI 3200001E	Cannulated Drill Bit 3.2 m	2
3	MOI 3200006E	Hex Screwdriver SW 3.5, Cannulated	1
4	MOI 3200008E	Hex Screwdriver SW 3.5, Solid	1
5	MOI 3200004E	Drill Sleeve 1.5/3.2 mm	1
*	MOI 3200000E	Tray and Container	1



USA OFFICE

2404 Hollywood Blvd.
Hollywood, FL 33020

PUERTO RICO OFFICE

1660 Santa Ana Street
Esq. Fidalgo Diaz,
San Juan, Puerto Rico 00909

E-mail: info@madisonorthoinc.com
Website: www.madisonorthoinc.com

