

EIGHT-Q

Guided Growth Plating System



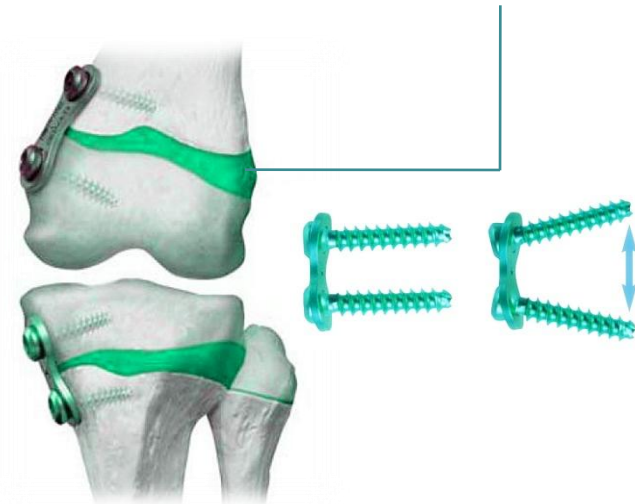
Limb deformities in children are relatively common and Occasionally require surgical treatment. The EIGHT-Q™ guided growth plating system is an extra-periosteal plate that uses the robust growth potential of the child's physis to gently guide correction of angular deformity. The system contains multiple plate sizes, along with cannulated and solid screw options to provide gentle, early intervention for patients as young as 18 months.

The Eight-Plate is a minimally invasive, secure implant for hemi-epiphysiodesis that allows speedy post-operative recovery with immediate weight bearing. The plate uses two holes and diverging screws to function like a hinge and avoid physis compression. It gently guides the natural growth process and restores limb alignment without the need for invasive osteotomy.

The Quad-Plate is designed to provide more surgical options inn the treatment of pediatric angular deformities.

Implant Features

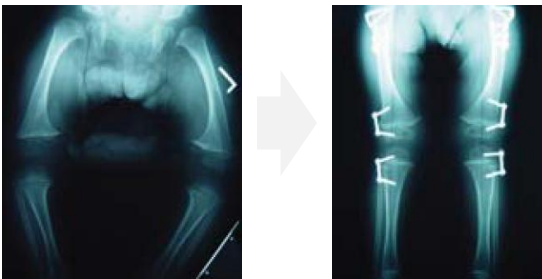
- Contoured plate bends for anatomic fit and flexibility during unilateral growth.
- Central pilot hole for accurate placement over the physis.
- Fully threaded cannulated screws resist pull out forces and allow easy removal after treatment.
- Diverging screws function like a hinge to gently guide natural growth.



Indications

The EIGHT-Q™ guided growth plating system is an angular deformity correction plate, indicated for gradual correction of pediatric deformities in upper and lower extremities:

- Cubitus varus (post supracondylar fracture)
- Knee valgus, varus, oblique plane, flexion deformity, recurvatum
- Ankle valgus



Implant Information

Eight-Plates

| REF (TIT) | SIZES (mm) |
|--------------|------------|
| MOI 35254012 | 12 |
| MOI 35254016 | 16 |



Quad-Plates

| REF (TIT) | SIZES (mm) |
|--------------|------------|
| MOI 35713016 | 16 |
| MOI 35713022 | 22 |



Cannulated Screw 4.5mm, cancellous

| REF (TIT) | SIZES (mm) |
|--------------|------------|
| MOI 35255016 | 16 |
| MOI 35355024 | 24 |
| MOI 35255032 | 32 |



Solid Screw 4.5mm, cancellous

| REF (TIT) | SIZES (mm) |
|--------------|------------|
| MOI 35714024 | 24 |
| MOI 35714032 | 32 |



Instrument Information

| | REF | DESCRIPTION | UNITS |
|---|--------------|---------------------------------|-------|
| 1 | MOI 3200001E | Cannulated Drill Bit, 3.2mm | 1 |
| 2 | MOI 3200002E | Threaded Wire, 1.6mm | 2 |
| 3 | MOI 3200003E | Drill Bit, 3.2mm | 1 |
| 4 | MOI 3200004E | Guide Drill, 3.2mm | 1 |
| 5 | MOI 3200005E | Wrench, Allen, 3.0mm Polyhedral | 1 |
| 6 | MOI 3200006E | Cannulated Screwdriver, 3.5mm | 1 |