

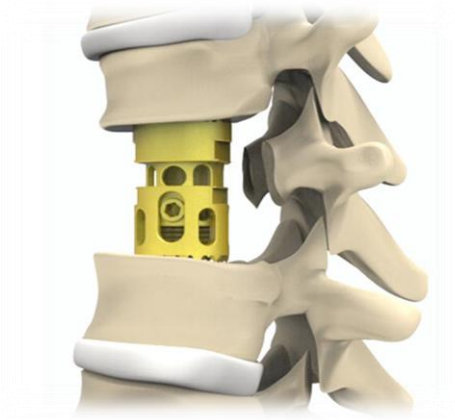
PRIMA™ VBR

Vertebral Body Replacement System

System Overview

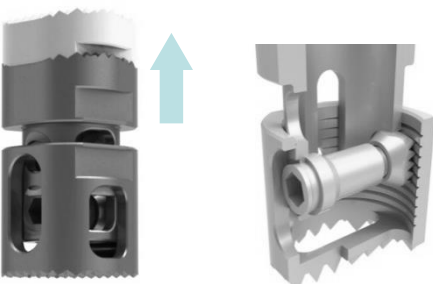
The PRIMA™ Vertebral Body Replacement System is designed to replace the vertebral body at the thoracic or lumbar level. The system consists of a titanium alloy Distractible In Situ implant, which enables the surgeon to customize the height of the implant after implantation. Adjustments of the implant height are achieved in situ as a result of the locking mechanism which maintains distraction.

The implant has the main advantage of being easy to use and perfectly adjustable to the patient's anatomy. Its adjustment allows a positioning in kyphosis as well as in lordosis by lateral or median approach.



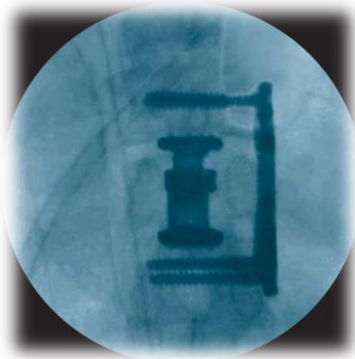
Implant Features

- Safe support and anchorage in the in-built vertebral endplates respect the adjacent vertebrae.
- In situ distraction allows precise adjustment of the implant height.
- Secure locking mechanism maintains the distracted implant height (1mm increment).
- Large graft areas improve fusion rate.
- Easy and quick set-up system.

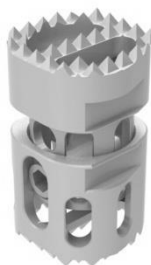


Indications for Use

Indications include pathologies which require vertebral reconstruction. The best indication remains for the vertebral tumoral disease with the need of rehabilitation after a corpectomy. It can also be used for degenerative and anterior traumatic diseases. It can also be associated to a bone graft inside and around the implant.



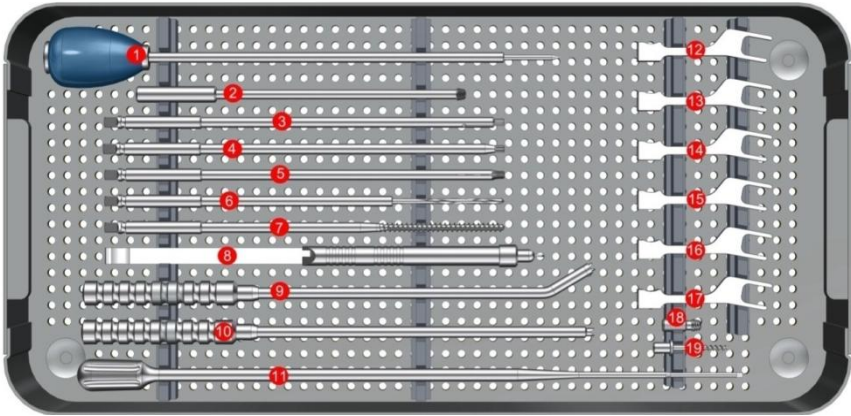
Implant Information [Material in Titanium Alloy (Ti-6Al-4V)]



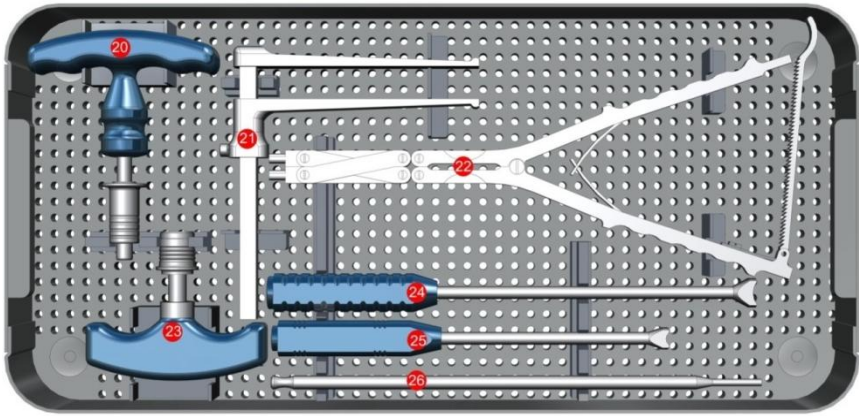
PRIMA™ VBR Device

REF (TIT)	Diameters (MM)	Sizes
MOI VBR001T	15	Small
MOI VBR002T	15	Medium
MOI VBR003T	15	Large
MOI VBR001TL	20	Small
MOI VBR002TL	20	Medium
MOI VBR003TL	20	Large

Instrument Set Details



REF CODE	DESCRIPTION	UNITS
1 3100016	Awl, Ø3.3 mm	1
2 3100015	TSLP Plate Holder	1
3 3100023	Tightening Screwdriver Shaft SW4.5	1
4 3100022	Selfholding Screwdriver Shaft SW4.5	1
5 3100021	Driver SW4.0, for Threaded Drill Guide & Fixation Pin	1
6 3100018	Drill Bit, Ø3.3mm	2
7 3100017	Tap for Cancellous Bone Screws Ø5.5mm	1
8 1700008	Depth Gauge	1
9 3100014	Forked Impactor, Angled	1
10 3100013	Forked Impactor, Straight	1
11 3100010	Screwdriver SW2.5, for VBR Implant	1
12 3100001	Tips for Parallel Distractor, 12L	1
13 3100002	Tips for Parallel Distractor, 12R	1
14 3100003	Tips for Parallel Distractor, 15L	1
15 3100004	Tips for Parallel Distractor, 15R	1
16 3100005	Tips for Parallel Distractor, 20L	1
17 3100006	Tips for Parallel Distractor, 20R	1
18 3100020	Threaded Drill Guide	4
19 3100019	Temporary Fixation Pin	2



REF CODE	DESCRIPTION	UNITS
20 3100025	Torque-limiting T-Handle, 7NM	1
21 3100007	Inter Vertebral Measuring Device	1
22 3100009	Parallel Distractor for VBR Implant	1
23 3100024	Quick Coupling T-Handle	1
24 3100011	Impactor, Crescent, Large	1
25 3100012	Impactor, Crescent, Small	1
26 3100008	Graft Pusher	1



USA OFFICE

4000 Island Blvd, Suite 2704
Aventura, Florida 33160

PUERTO RICO OFFICE

1660 Santa Ana Street
Esq. Fidalgo Diaz,
San Juan, Puerto Rico 00909

E-mail:

info@madisonorthoinc.com

Website:

www.madisonorthoinc.com

