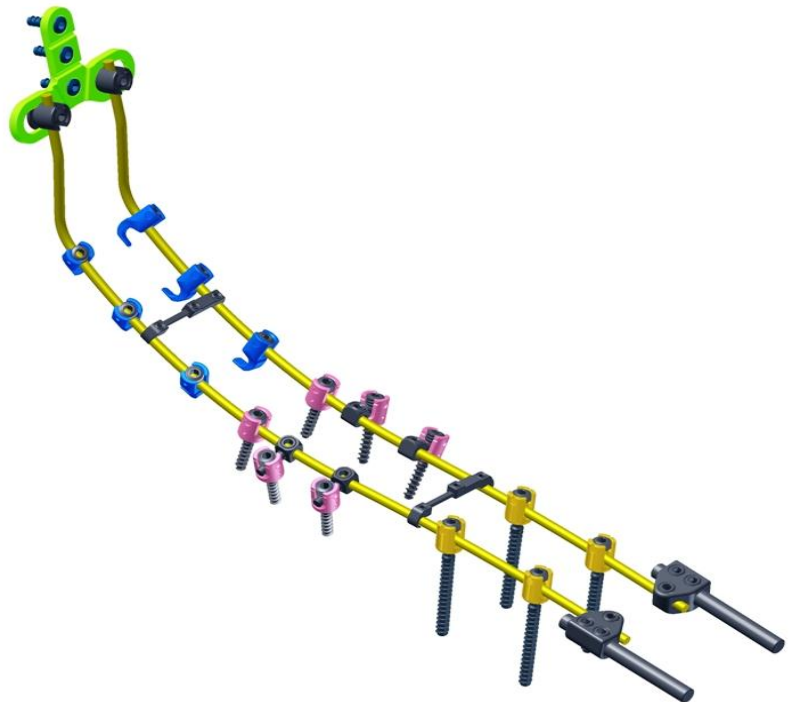


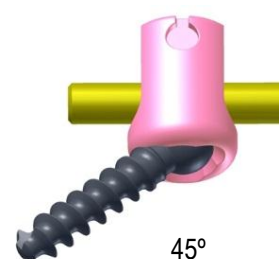
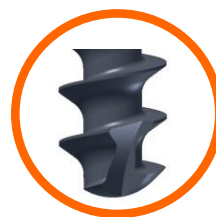
The PLUTO<sup>™</sup> Occipito-Cervical Fusion System is a versatile system that is designed to be effective in treating the more challenging cases in the posterior occipito-cervical and upper thoracic spine.

The PLUTO<sup>™</sup> System is comprised of cervical laminar hooks, thoracic poly-axial screws, and lateral rod connectors and midline occipital plates. The laminar hook is designed to provide excellent fit and fixation to the sub-axial cervical and upper thoracic spine. The poly-axial screw offers a degree of angulation and independent screw placement that reduces the need to contour the rod. A lateral rod connector provides a way to connect non-linear poly-axial screws to the rod. This enables us to best fit the anatomy of our patient. The occipital plate is intended to provide stabilization and promote fusion of the occipito-cervical junction.



## Features & Benefits

- The implants provide the flexibility required to accommodate variations in patient anatomy.
- Variable angle self-tapping cortical and cancellous screws.
- System includes a complete set of implants and instruments designed to optimize fixation to the occiput.



## Indications for Use

The PLUTO™ Spine System is designed for posterior stabilization of the occipito-cervical spine and upper thoracic spine. The implants provide the flexibility required to accommodate variations in patient anatomy.

- ◆ Instabilities in the occipito-cervical spine.
- ◆ Instabilities in the lower cervical and upper thoracic spine.
- ◆ Degenerative and painful post-traumatic conditions in the (insert space) lower cervical and upper thoracic spine.
- ◆ Anterior cervical fusions requiring additional posterior stabilization.

## Implant Information [Material in Titanium Alloy (Ti-6Al-4V)]



### Hook, 3.2mm

SIZE	REF
3.2 X 6.0 mm	MOI 37103060
3.2 X 4.5 mm	MOI 37103045



### Crosslink Plate

SIZE	REF
25 - 30 mm	MOI 37104050
30 - 40 mm	MOI 37104060
40 - 60 mm	MOI 37104070



### Double Rod Connector, 3.2mm

SIZE	REF
3.2 X 5.5 mm	MOI 37105055
3.2 X 6.0 mm	MOI 37105060



### Lateral Rod Connector, 3.2mm

SIZE	REF
3.2 X 3.2 mm	MOI 37106060



### Set Screw

SIZE	REF
3.2 mm	MOI 37107032



### Occipital Screw

SIZE	REF
4.0 X 5.0 mm	MOI 37110050
4.0 X 6.0 mm	MOI 37110060
4.0 X 7.0 mm	MOI 37110070
4.0 X 8.0 mm	MOI 37110080



### Midline Occipital Plate \_ 3 Holes

SIZE	REF
3 Holes	MOI 37108003



### Occipital Cervical Plate \_ 4 Holes

SIZE	REF
4 Holes	MOI 37109004



### Poly-Axial Screw (PAS), 3.5mm

SIZE	REF
3.5 X 12 mm	MOI 37101012
3.5 X 14 mm	MOI 37101014
3.5 X 16 mm	MOI 37101016
3.5 X 18 mm	MOI 37101018
3.5 X 20 mm	MOI 37101020
3.5 X 22 mm	MOI 37101022
3.5 X 24 mm	MOI 37101024
3.5 X 26 mm	MOI 37101026
3.5 X 28 mm	MOI 37101028
3.5 X 30 mm	MOI 37101030



### Poly-Axial Screw (PAS), 4.0mm

SIZE	REF
4.0 X 12 mm	MOI 37102012
4.0 X 14 mm	MOI 37102014
4.0 X 16 mm	MOI 37102016
4.0 X 18 mm	MOI 37102018
4.0 X 20 mm	MOI 37102020
4.0 X 22 mm	MOI 37102022
4.0 X 24 mm	MOI 37102024
4.0 X 26 mm	MOI 37102026
4.0 X 28 mm	MOI 37102028
4.0 X 30 mm	MOI 37102030



### Rod, 3.2mm

SIZE	REF
3.2 X 30 mm	MOI 37112030
3.2 X 40 mm	MOI 37112040
3.2 X 50 mm	MOI 37112050
3.2 X 60 mm	MOI 37112060
3.2 X 70 mm	MOI 37112070
3.2 X 80 mm	MOI 37112080
3.2 X 90 mm	MOI 37112090
3.2 X 100 mm	MOI 37112100
3.2 X 200 mm	MOI 37112200

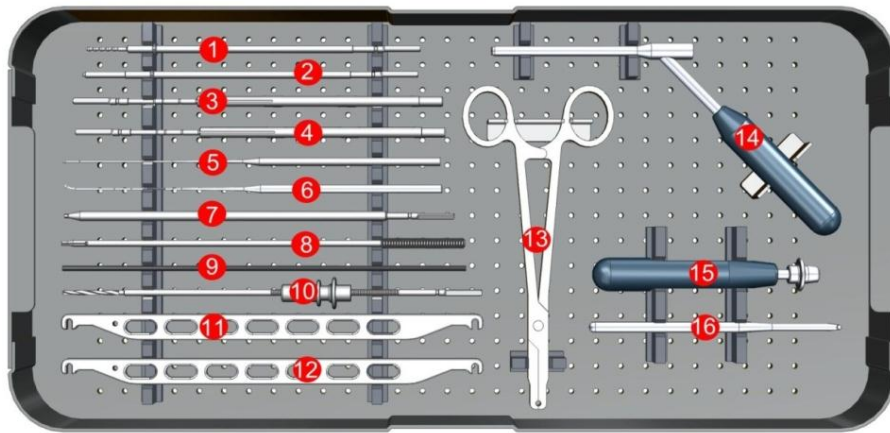
### Occipital Plate / Rod (optional)

SIZE	REF
3.2 X 100 mm	MOI 37111100
3.2 X 200 mm	MOI 37111200

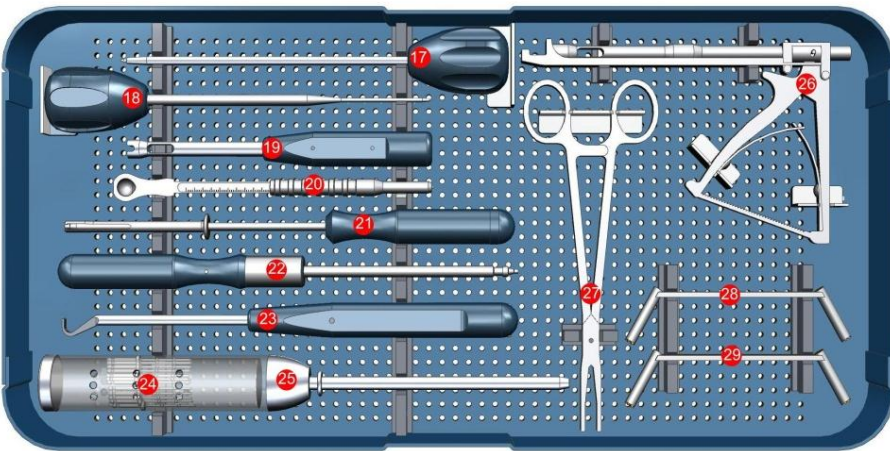


## INSTRUMENTS INFORMATION

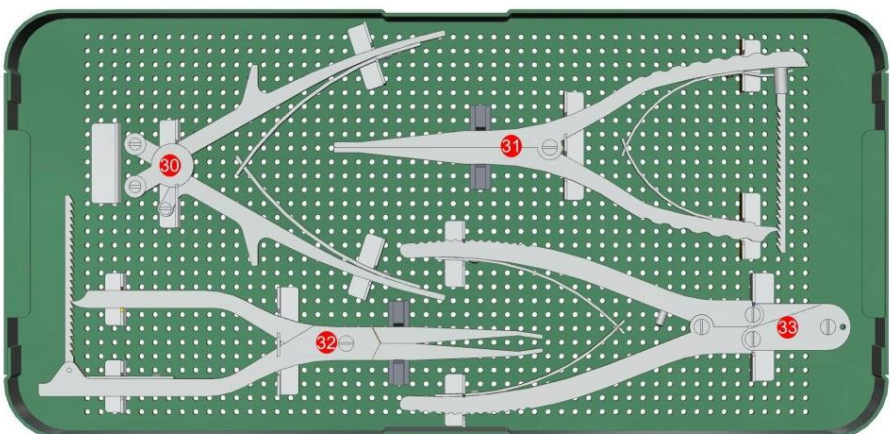
## PLUTO™ Occipito-Cervical Fusion System Instrument Set



REF	DESCRIPTION	UNITS
1	MOI 2200001 3.5mm Occipital Drill Bit	2
2	MOI 2200002 Occipital Tap	1
3	MOI 2200003 3.5mm Cancellous Tap	2
4	MOI 2200004 4.0mm Cancellous Tap	1
5	MOI B0700004 Pedicle Feeler, straight	1
6	MOI B0700003 Pedicle Feeler, curved	1
7	MOI 2200005 Nut Screwdriver Shaft	1
8	MOI 2200006 Nut Holder	2
9	MOI 2200007 Rod Template	1
10	MOI 1900016 Adjustable Drill Bit	1
11	MOI 2200008 Bending Iron, left	1
12	MOI 2200009 Bending Iron, right	1
13	MOI 2200011 Rod Holder	1
14	MOI 2200010 Drill Guide	1
15	MOI 1900003 Universal Handle	1
16	MOI 2200012 Alignment Tool	1



REF	DESCRIPTION	UNITS
17	MOI 2200013 Awl	1
18	MOI 2200014 Pedicle Probe	1
19	MOI 2200015 Rod Pusher / Counter Torque	1
20	MOI 2200016 Depth Gauge	1
21	MOI 1900009 Occipital Screwdriver with Screw Holder	1
22	MOI 2200017 Threaded Screwdriver	1
23	MOI 2200018 Laminar Elevator	1
24	MOI 2200020 Pedicle Marker, left and right	6/6
25	MOI 2200019 Pedicle Marker Inserter	1
26	MOI 2200021 Rod Reducer	1
27	MOI 2200022 Hook Holder	1
28	MOI 2200023 Occipital Drill-Tap Guide, 6mm / 8mm	1
29	MOI 2200024 Occipital Drill-Tap Guide, 10mm / 12mm	1



REF	DESCRIPTION	UNITS
30	MOI 2200025 Rod Bender	1
31	MOI 1300016 Distractor Forceps	1
32	MOI 2200026 Compressor Forceps	1
33	MOI 2200027 Rod Cutter	1